

**AUTO**  
**Strong**

PRODUCT CATALOG

---

# COLLET CHUCK



A STRONGHOLD BY PRECISION AND POWER

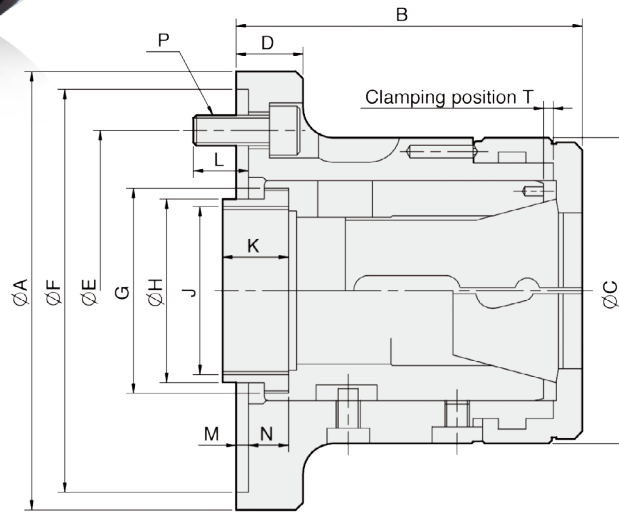


Product schematic

# CR

## Collet chuck for cylindrical center mount

1. Collet chucks with bayonet catch are mainly used for chucking bar work on NC / CNC lathes.
2. The bar can be fed in through the chuck.
3. Profiles can also be chucked with the appropriate collets.



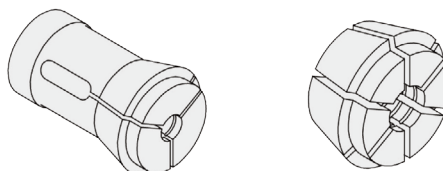
UNIT : mm

SPEC Model	Matching Adapter	Bar Capacity (mm)	Sleeve Stroke (mm)	Max. Push Force kN(kgf)	Max. Gripping Force kN(kgf)	Max. Speed (r.p.m.)	Weight (kg)
CR42-140	140	42	7	25(2549)	55(5608)	6000	6.2
CR52-170	170	52	7	30(3059)	65(6628)	5000	12.5
CR60-170	170	60	7	30(3059)	65(6628)	5000	11.5
CR60-220	220	60	7	30(3059)	65(6628)	5000	15.5
CR80-220	220	80	7	35(3568)	73(7443)	4000	19.5

DIM Model	A (h6)	B	C	D	E	F (H6)	G	H	J max.	K	L	M	N	P	T
CR42-140	155	114	100	23	104.78	140	M66xP1.5	60	M55xP2.0	25	18	6	11.9	3-M10	3.1
CR52-170	185	138	130	30	133.35	170	M90xP1.5	66.7	M60xP2.0	30	18	6	17.9	6-M12	3.1
CR60-170	185	139	130	30	133.35	170	M90xP1.5	79.6	M74xP2.0	25	18	6	17.9	6-M12	3.1
CR60-220	235	141	130	32	171.45	220	M90xP1.5	79.6	M74xP2.0	25	20	6	19.9	6-M16	3.1
CR80-220	235	167	156	32	171.45	220	M114xP2.0	99	M90xP2.0	27.5	20	6	23.4	6-M16	6.1

Capacities Chuck	MULTIBORE	SPRING COLLET
NO.	Cat.No. / ○ / ○ / □	Cat.No. / ○ / ○ / □
CR42	M-673 / 42 / 36 / 30	173E/4728 / 42 / 36 / 30
CR52	— / — / — / —	177E / 52 / 45 / 36
CR60	M-677 / 60 / 52 / 42	185E/4291 / 60 / 52 / 42
CR80	J-660 / 80 / 69 / 56	193E/H-47 / 80 / 69 / 56

### Collet Drawings



- Spring Collet -

- Multi-Bore Collet -

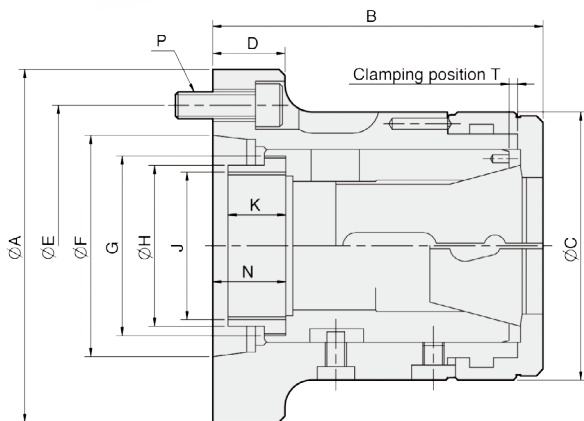


# CRA

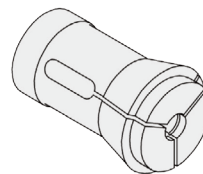
## Collet chuck for short taper mount

1. Collet chucks with bayonet catch are mainly used for chucking bar work on NC / CNC lathes.
2. The bar can be fed in through the chuck.
3. Profiles can also be chucked with the appropriate collets.

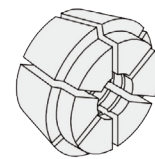
Product schematic



Collet Drawings



- Spring Collet -



- Multi-Bore Collet -

UNIT : mm

SPEC Model	Matching Spindle	Bar Capacity (mm)	Sleeve Stroke (mm)	Max. Push Force kN(kgf)	Max. Gripping Force kN(kgf)	Max. Speed (r.p.m.)	Weight (kg)
CR26A4	A2-4	26	5	20(2039)	44(4486)	7000	4,5
CR30A4	A2-4	30	5	20(2039)	44(4486)	7000	4,1
CR42A5	A2-5	42	7	25(2549)	55(5608)	6000	6,2
CR42A6	A2-6	42	7	25(2549)	55(5608)	6000	8,2
CR52A6	A2-6	52	7	30(3059)	65(6628)	5000	12,2
CR60A6	A2-6	60	7	30(3059)	65(6628)	5000	13
CR65A6	A2-6	67	7	30(3059)	65(6628)	5000	10,6
CR80A8	A2-8	80	7	35(3568)	73(7443)	4000	21

Capacities Chuck	MULTIBORE	SPRING COLLET
NO.	Cat.No. / ○ / ○ / □	Cat.No. / ○ / ○ / □
CR26	M-667 / 26 / 22 / 18	161E/8744 / 26 / 22 / 18
CR30	M-669 / 30 / 26 / 21	163E/4249 / 30 / 26 / 21
CR42	M-673 / 42 / 36 / 30	173E/4728 / 42 / 36 / 30
CR52	— / — / — / —	177E / 52 / 45 / 36
CR60	M-677 / 60 / 52 / 42	185E/4291 / 60 / 52 / 42
CR65	— / — / — / —	SAD-65 / 67 / 58 / 47
CR80	J-660 / 80 / 69 / 56	193E/H-47 / 80 / 69 / 56

DIM Model	A	B	C	D	E	F	G	H	J <sub>max.</sub>	K	N	P	T
CR26A4	112	103.5	85	30	82.55	63.513	M50xP1.5	45	M40xP1.5	15	22.2	3-M10	2.3
CR30A4	112	103.5	85	30	82.55	63.513	M50xP1.5	45	M40xP1.5	15	22.2	3-M10	2.3
CR42A5	135	127	100	27	104.78	82.563	M66xP1.5	60	M55xP2.0	25	30.9	4-M10	3.1
CR42A6	170	127	100	32	133.35	106.375	M66xP1.5	66	M60xP2.0	22	30.9	4-M12	3.1
CR52A6	170	144	130	27	133.35	106.375	M90xP1.5	66.7	M60xP2.0	30	29.9	4-M12	3.1
CR60A6	170	145	130	27	133.35	106.375	M90xP1.5	79.6	M74xP2.0	25	29.9	4-M12	3.1
CR65A6	170	135	136	27	133.35	106.375	M95xP1.5	81	M75xP2.0	20	29.9	4-M12	3.1
CR80A8	220	170	156	35	171.45	139.719	M114xP2.0	99	M90xP2.0	27.5	32.4	6-M16	6.1