

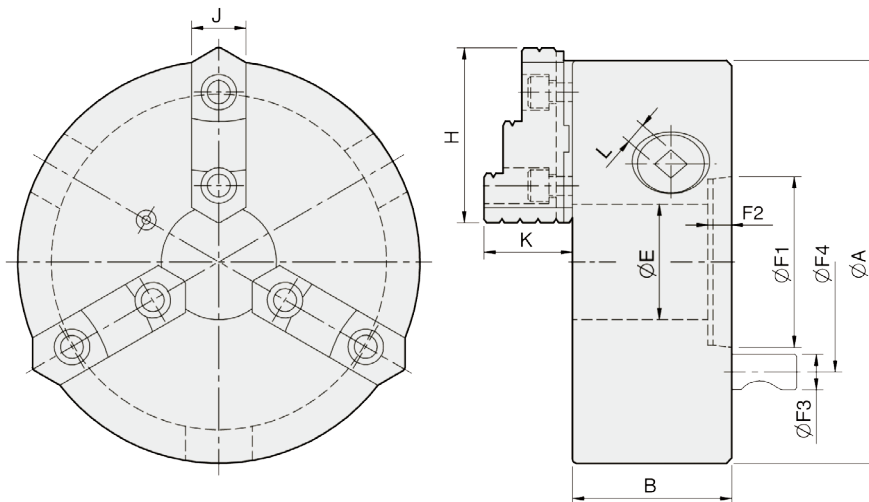


KD

3-jaw strong scroll chuck D1 camlock direct mounting, 2-piece jaws

1. Gripping accuracy of 0.03mm (0.0012 inch) T.I.R..
2. Standard accessories chuck wrench, hex. key. and a set of mounting bolts. (UNC-bolts)
3. The body is made of MEEHANITE. It is suitably used for high speed revolution and 3 times more durable than regular material.

Product schematic



UNIT : mm

SPEC Model	Spindle Size	A	B	E	H	J	K	L	Mounting Dimensions				Allowable Handle Torque (kgf · m)	Gripping Force (kgf)	Max. Speed (r.p.m.)	Weight (kg)	Moment Of Inertia I (kg · m ²)	Gripping Range	
									F1	F2	F3	F4						O.D. Range	I.D. Range
KD4-8"	D1-4	200	77.2	53	82	28	42.2	11	63.513 / 13 / 15.8 / 82.55	11.5	2500	2000	18.5	0.07	Ø8-Ø180 / Ø62-Ø170				
KD5-8"	D1-5	200	77.2	55	82	28	42.2	11	82.563 / 16 / 19 / 104.78	11.5	2500	2000	18	0.07	Ø8-Ø180 / Ø62-Ø170				
KD6-8"	D1-6	200	77.2	58	82	28	42.2	11	106.375 / 17 / 22.2 / 133.35	11.5	2500	2000	17	0.07	Ø8-Ø180 / Ø62-Ø170				
KD6-10"	D1-6	250	86	76	90.9	32	50.8	12	106.375 / 17 / 22.2 / 133.35	19.5	4000	1800	29.5	0.2	Ø11-Ø220 / Ø70-Ø210				
KD6-12"	D1-6	306	107.5	103	114.5	40	57.8	14	106.375 / 13.5 / 22.2 / 133.35	21.0	4200	1800	47	0.5	Ø15-Ø300 / Ø90-Ø290				
KD8-10"	D1-8	250	86	80	90.9	32	50.8	12	139.719 / 19 / 25.4 / 171.45	19.5	4000	1800	27	0.2	Ø11-Ø220 / Ø70-Ø210				
KD8-12"	D1-8	306	107.5	103	114.5	40	57.8	14	139.719 / 18 / 25.4 / 171.45	21.0	4200	1800	47	0.5	Ø15-Ø300 / Ø90-Ø290				